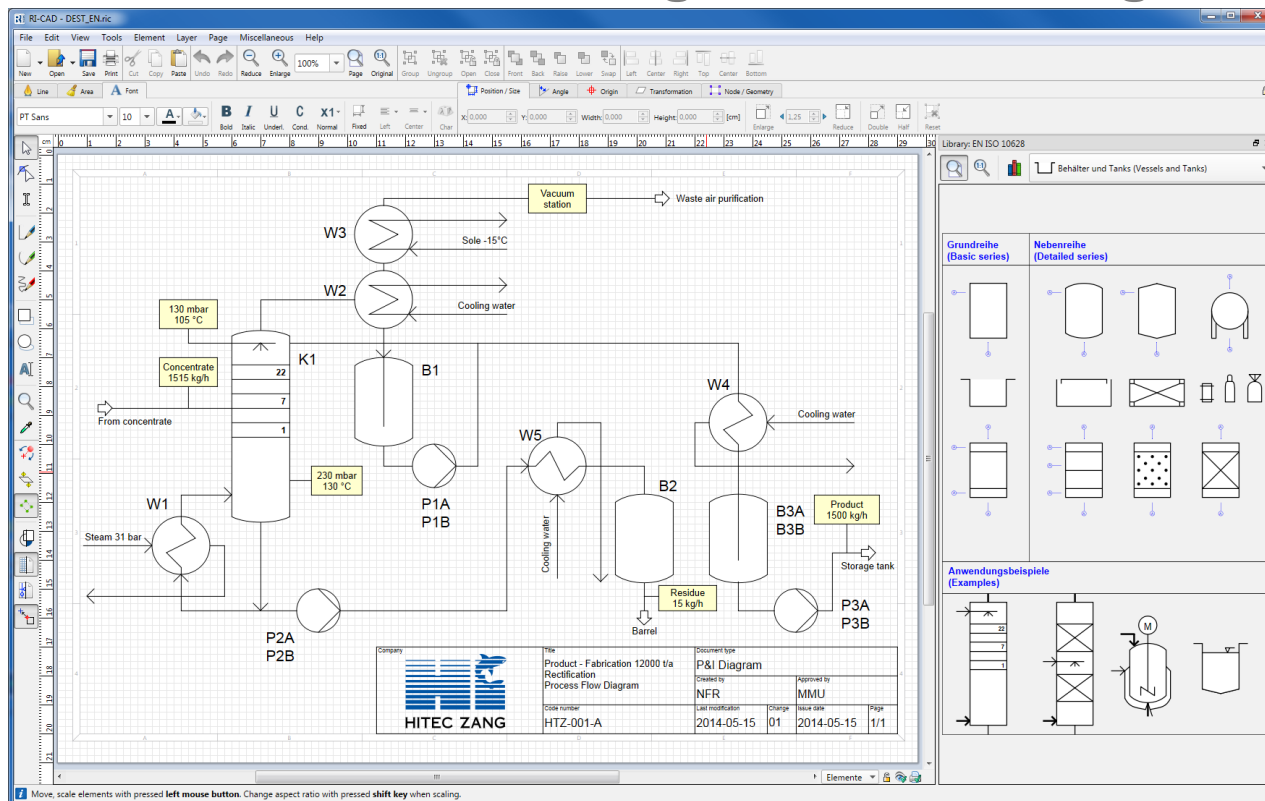


Free-of-charge education version

for students, pupils, lecturers and teachers:



RI-CAD™ for the drawing of P&I flow diagrams



This is how users rate it: „...I'm impressed by the ease of handling of your software... Yesterday I presented your software for the first time to students, they were excited... Until now we have made these drawings using CAD software, your solution is much more comfortable to use.“

RI-CAD™ enables the creation of P&I flow diagrams and other forms of drawing without a long time for familiarisation. For this reason it is particularly popular for use in education.

RI-CAD™ was especially developed for the drawing of P&I flow diagrams and contains a library in accordance with EN ISO 10628.

The toolbox contains all the required drawing tools.

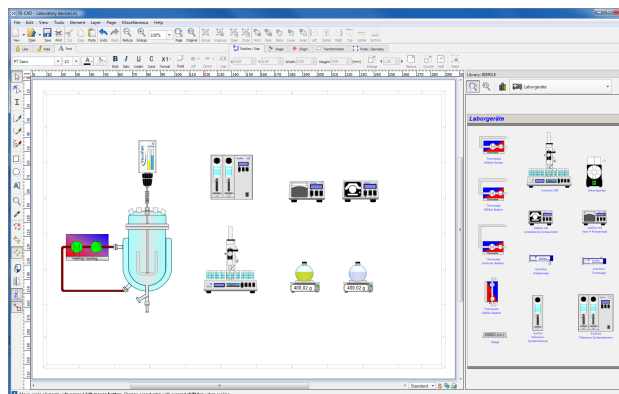
Attached to the library elements is additional information which can be extended as required to include such as supplier or maintenance information. You can adapt and expand the library as much as you wish.

Laboratory component library

The laboratory component library for RI-CAD™ contains displays of the components of a laboratory process plant which are more detailed and more realistic than the objects in the EN ISO 10628 library.

Here you will find glass reactors of various designs and sizes and glass appliances, such as reflux separators, coolers, vessels etc. as well as clear representations of other laboratory apparatus.

Further libraries, such as electric diagram library, are available on request.



Activation

Download the RI-CAD™ demo version from our website www.hitec-zang.com and install it on your computer. If you are happy with the program, you can activate it as follows:

After the program has started, click on „Activate“. Using the hardware ID which is then displayed, request your personal licence code via our website. After your details have been checked, you will receive your licence code by e-mail. Enter your licence code in the RI-CAD™ activation dialogue. Then you can make unrestricted use of the program for training purposes.