

# Switch Cabinet *TO GO*

The most flexible solution for switch cabinets



The switch cabinet *TO GO* is manufactured individually according to your requirements. Mobile and adapted to the available space, it can be placed exactly where you need it: on batch, continuous or miniplant systems, in the laboratory or in the pilot plant. In this way, you can flexibly operate several systems at the same time with one switch cabinet.

The display and operating system for convenient process control are already fully integrated in the switch cabinet *TO GO*.

- ✓ highest flexibility
- ✓ maximum safety
- ✓ especially designed for your needs
- ✓ one switch cabinet - several plants
- ✓ integrated research process control system

## Integrated safety monitoring

The integrated monitoring guarantees maximum safety for man and machine. Among others, the following are tested:

- » pressure
- » temperature
- » rotation speed
- » filling level
- » flow of gas
- » and much more

The classification of functional safety is possible according to SIL or Performance Level (PL). If required, we can also implement project planning for ATEX.

For protection against dust and water jets, the field cabling can be designed in IP65.

## Applications

Our switch cabinet *TO GO* can be used for example in the chemical, pharmaceutical, bio or food industry.



Switch Cabinet *TO GO*

The combination of the switch cabinet *TO GO* with the proven team of LabManager® and LabVision® software guarantees the necessary flexibility for frequently changing tasks in laboratory operation.

## LabManager®

- » Variety of connections - easy connection of all required laboratory devices
- » Modular - freely combinable panels according to your requirements
- » Functional - Automatic test management and seamless process control

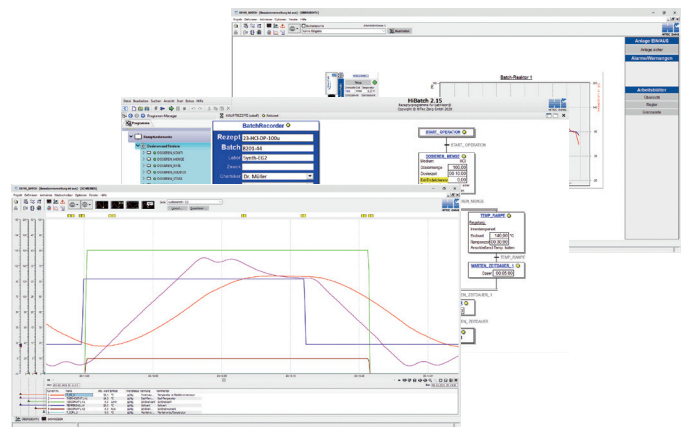


LabManager®

## LabVision®

With the LabVision® software your processes are monitored, controlled and regulated. All processes are recorded and archived.

- » Complete documentation of the entire process
- » Consistent presentation of values, events and process phases
- » Realisation of a processing data chain without interruption from the job order to the laboratory information management system



LabVision® multi-plotter, recipe control and process overview

## Technical Data

- » Dimensions (W x H x T):  
90 x 203 x 65 cm (with signal lamp)  
90 x 183 x 65 cm (switch cabinet only)
- » Power supply: 230 / 400 V AC CEE16; CEE 32 possible
- » Field connectors: up to IP 65
- » Panel places: 11 places in LabManager®; integrated IU with UPS
- » Documentation: E-Plan Electric P8 V2.9 or higher
- » Model setup: in the illustrated example up to 0.75 kw, 4 ext. DO, 4 external ethernet ports

Contact us. Our experts will be happy to advise you.

HiTec Zang GmbH  
Ebertstraße 28-32  
52134 Herzogenrath  
Germany  
+49 (0)2407 / 910 100  
info@hitec-zang.de  
www.hitec-zang.com

